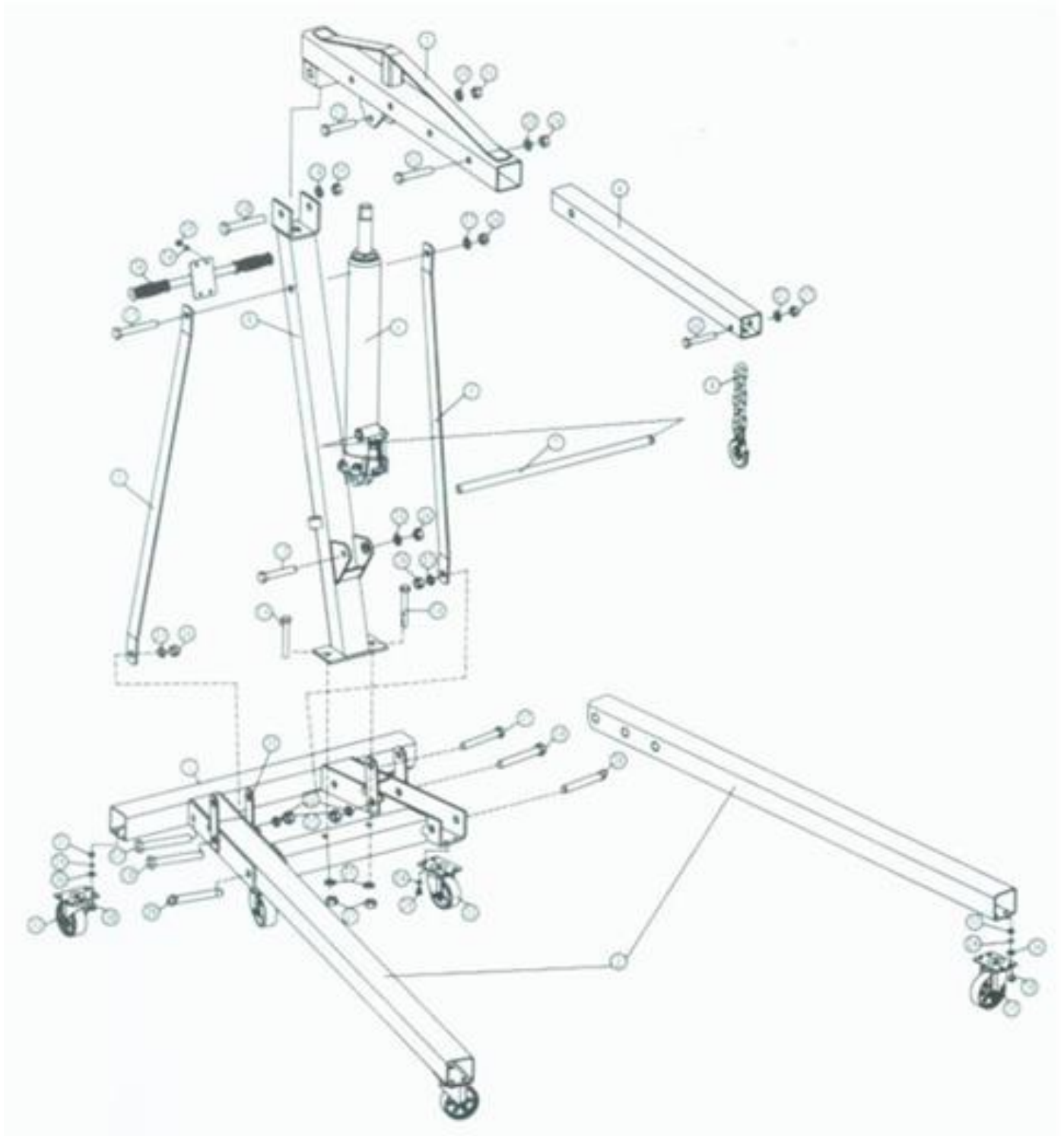




# ENGINE CRANE

## OPERATING INSTRUCTIONS MANUAL

### MODEL : DTEC2000/ DTEC3000





## OPERATING INSTRUCTIONS MANUAL

Part	Description	Qty	Part	Description	Qty
1	Frame base	1	19	Washer 18	1
2	Front leg	2	20	Washer 16	4
3	Boom	1	21	Washer 14	3
4	Boom extension	1	22	Spring washer 18	2
5	Support strap	2	23	Spring washer 16	2
6	Hydraulic ram	1	24	Spring washer 8	28
7	Pump handle	1	25	Nut 18	3
8	Hook chain assembly	1	26	Nut 16	6
9	Main support post	1	27	Nut 14	3
10	Bolt M18x110	1	28	Frame pin W/hair pin	2
11	Bolt M16x90	1	29	Bolt M8x12	12
12	Bolt M16x90(8.8)	1	30	Bolt M8x20	16
13	Bolt M16x75(8.8)	1	31	Nut M8	16
14	Bolt M14x100	2	32	Swivel caster 3"	2
15	Bolt M16x110	1	33	Swivel caster 3-1/2"	4
16	Bolt M14x75(8.8)	1	34	Handle	1
17	Bolt M16x110	2	35	Connect plate	4
18	Bolt M18x120	2	36	Washer 8	16

### ENGINE CRANE

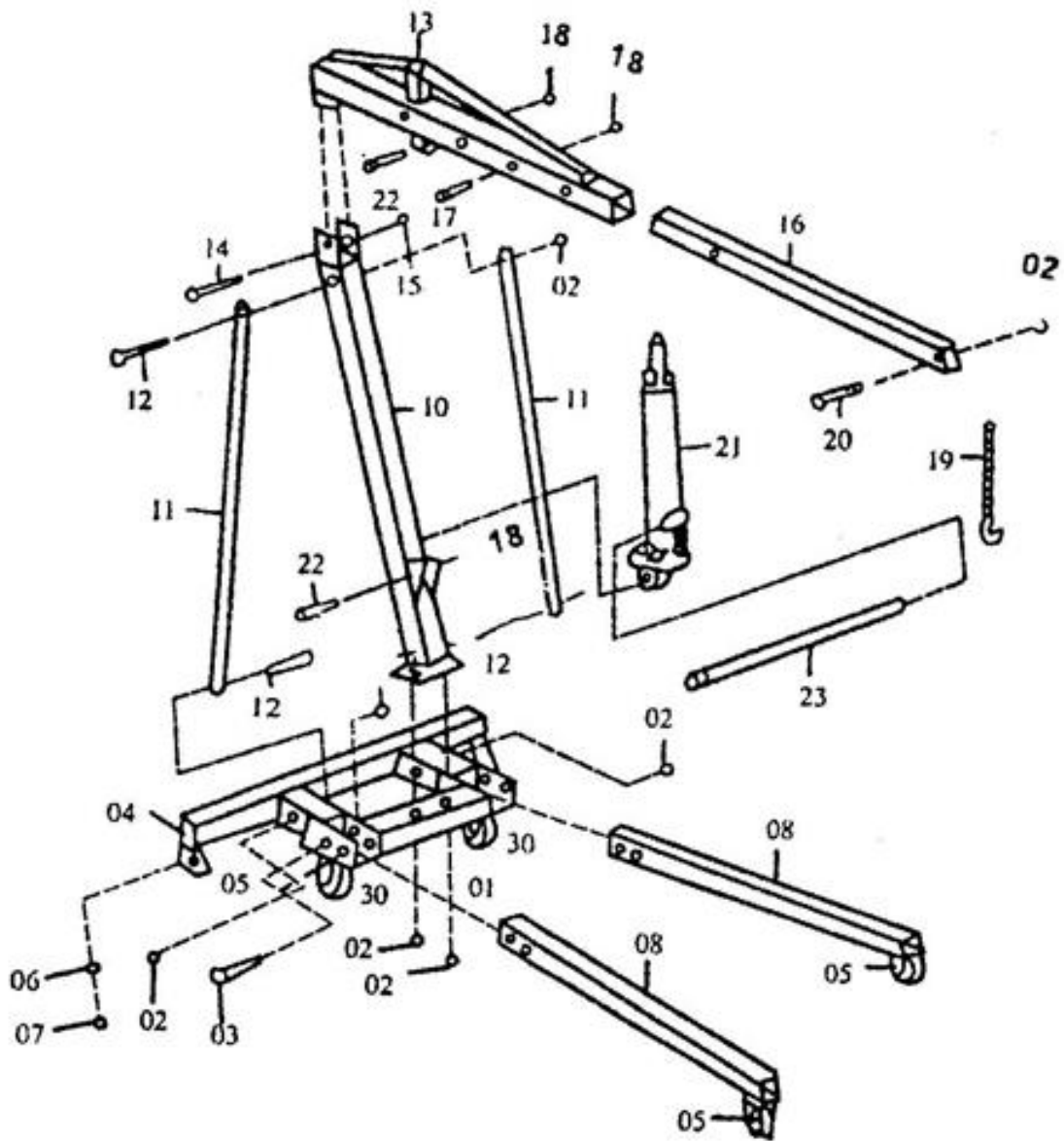
**MODEL : DTEC2000/ DTEC3000**



Operating Instructions  
and parts list

2 Ton  
Capacity

FOLDING HYDRAULIC SHOP CRANE





**Operating Instructions  
and parts list**

**2 Ton  
Capacity**

**FOLDING HYDRAULIC SHOP CRANE**

PARTS LIST			HARDWARE LIST		
REF	DESCRIPTION	QTY	REF	DESCRIPTION	QTY
01	BASE	1	02	NUT (M14)	6
08	BASE EXTENSIONS	2	03	PIN (M16.110)	4
10	POST	1	14	BOLT (M16.120)	1
11	SUPPORTS	2	15	NUT (M20)	1
13	BOOM	1	17	BOLT (M16 90)	1
16	BOOM EXTENSIONS	1	18	NUT (M16)	3
19	HOOK AND CHAIN	1	20	BOLY (M14 80)	1
21	JACK (8000KG)	1	22	BOLT (M16 75)	1
23	JACK HANDLE	1	12	BOLT (M12.90)	3
30	SWIVEL WHEEL	2	05	SWIVEL WHEEL	2